

MEETINGS & EVENTS

***NOBU HOTEL***

LONDON PORTMAN SQUARE





# NOBU HOTEL LONDON PORTMAN SQUARE



# LUXURY LIFESTYLE HOTEL IN LONDON



Located in the heart of central London's chic Marylebone area, Nobu Hotel London Portman Square is the ultimate location for meetings, events and conferences of all sizes.

Our range of stylish, state-of-the-art spaces can accommodate every event – from a boardroom meeting for 10, to an elaborate reception for 700 – while your designated Nobu events planner will ensure every detail is taken care of, and our Chefs are on hand to create bespoke menus featuring signature Nobu classics or contemporary European cuisine.

The event spaces at Nobu Hotel London Portman Square are conveniently located centrally in the heart of the hotel, with an abundance of natural light and views over the hotel lobby.





## NOBU-STYLE

A true highlight to every event at Nobu Hotel London Portman Square is to experience and delight in the iconic Nobu cuisine. From delicious sit-down breakout lunches to elegant canapés, guests can enjoy bespoke menus featuring the Nobu classic tastes including Miso Black Cod and Yellowtail Jalapeño, plus many more. The Nobu Bento Box is also available – perfect for quick business lunches and roadshows.



NOBU HOTEL  
FOURMAN SQUARE

NOBU EVENTS



## CORPORATE EVENTS

Our grand Nobu Ballroom is one of London's most stylish and tech-enabled spaces, featuring a 9 metre LED screen, up to 550 theatre style, and 250 cabaret style, with natural light with spacious pre-function area and best of all, Nobu cuisine for a function of any size.





## GROUPS

With 249 Rooms & Suites, we welcome groups of all sizes, whether travelling for business or just visiting London for the sights and experiences in our great city. Our expert team is available to help provide the perfect group stay in the heart of Marylebone; from amenities and preferential rates, to assisting with itineraries from the moment you touch down. Enjoy all aspects of the hotel with your party and allow us to take care of everything.





## BUSINESS MEETINGS

For business meetings, we offer private spaces equipped with 75-inch screens with ultra-wide camera lenses, a range of fully integrated audio-visual features, room set-ups customised for various-sized gatherings, as well as support from multi-lingual, tech-savvy teams.

Located in the vibrant neighbourhood of Marylebone, West London, and with Nobu's distinctively crafted menus for meal breaks, your event is guaranteed to be a memorable success.

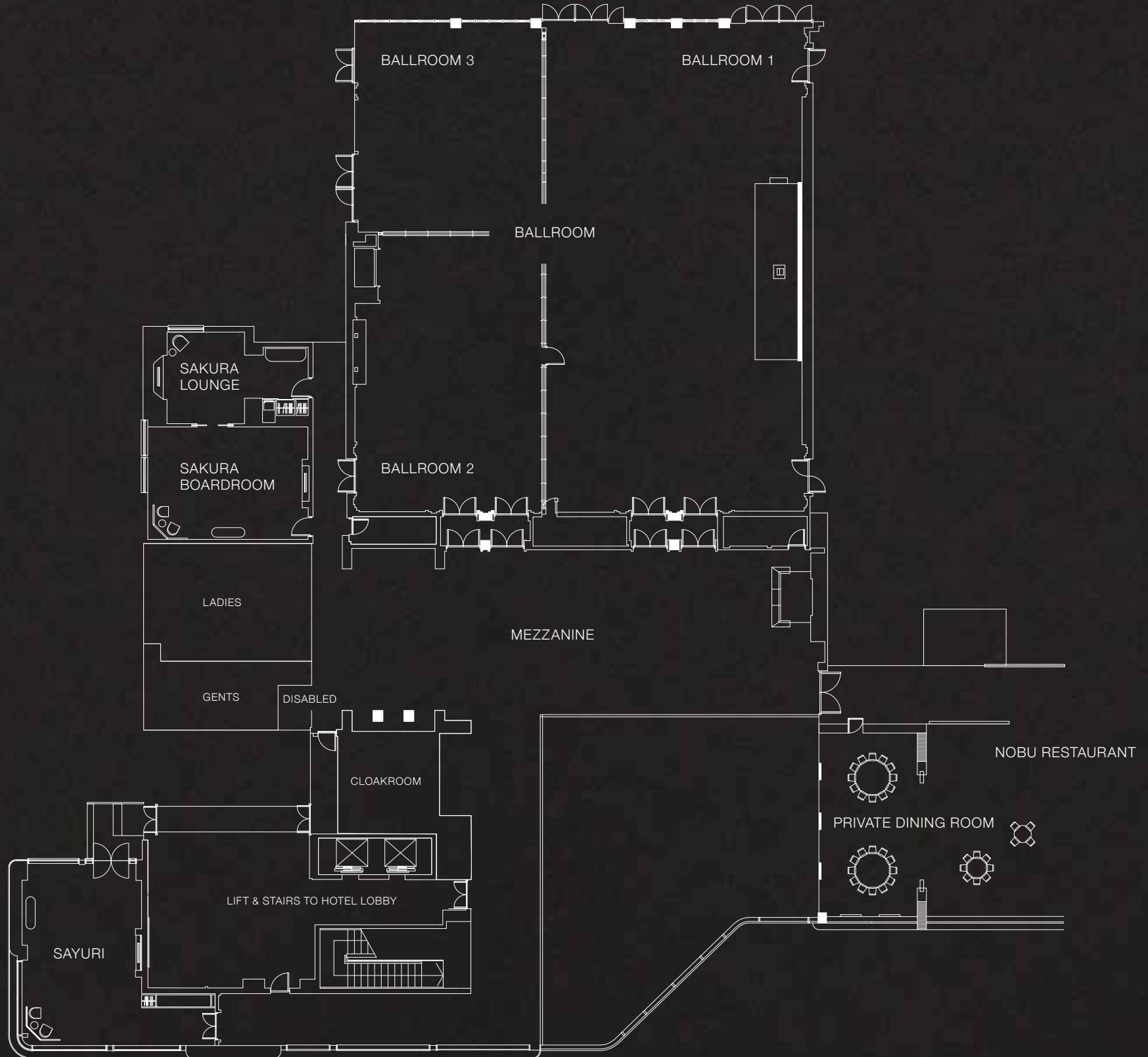




---

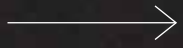
EVENT SPACES

OVERALL FLOORPLAN



EVENT ROOM SPECIFICATIONS  
& CAPACITIES

	THEATRE STYLE	CLASSROOM STYLE	CABARET STYLE FP (8 PER TABLE)	BOARDROOM STYLE	RECEPTION	RECEPTION WITH DANCING	DINNER (10 PER TABLE)	DINNER DANCE	U-SHAPE	HOLLOW SQUARE
NOBU BALLROOM	500	220	256	72	700	600	400	330		
NOBU BALLROOM 1	280	160	160		400	300	220	160		
NOBU BALLROOM 2	40			22	60		50			
NOBU BALLROOM 3	80	48	40	22	80	40	70	40	27	36
MEZZANINE					200					
SAKURA BOARDROOM	N/A	N/A	N/A	14		N/A	16	N/A	N/A	N/A
SAKURA LOUNGE					16					
SAYURI ROOM	45	24	24	22	40	N/A	3 ROUNDS - 30 1 LONG - 22		20	22
SAYURI FOYER					30	N/A				
PDR							LONG TABLE - 20 ROUNDS - 28			



VIEW THE NOBU  
BALLROOM FLOORPLAN



## NOBU Ballroom

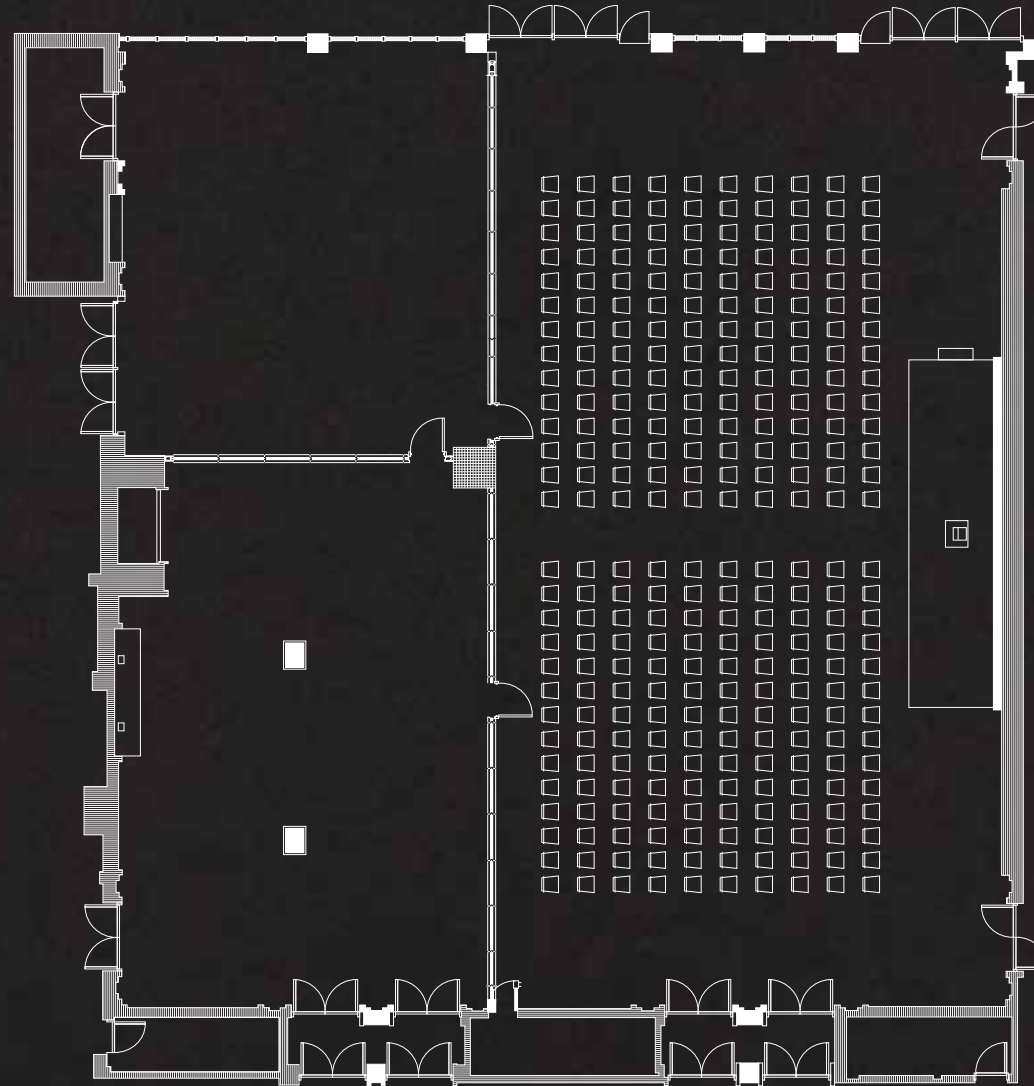
Our grand Nobu Ballroom has been designed to provide stylish, versatile and beautiful spaces that are tech-enabled, with cameras, rigging points and screens, making it ideal for large gatherings and the perfect canvas to put your visions into reality.



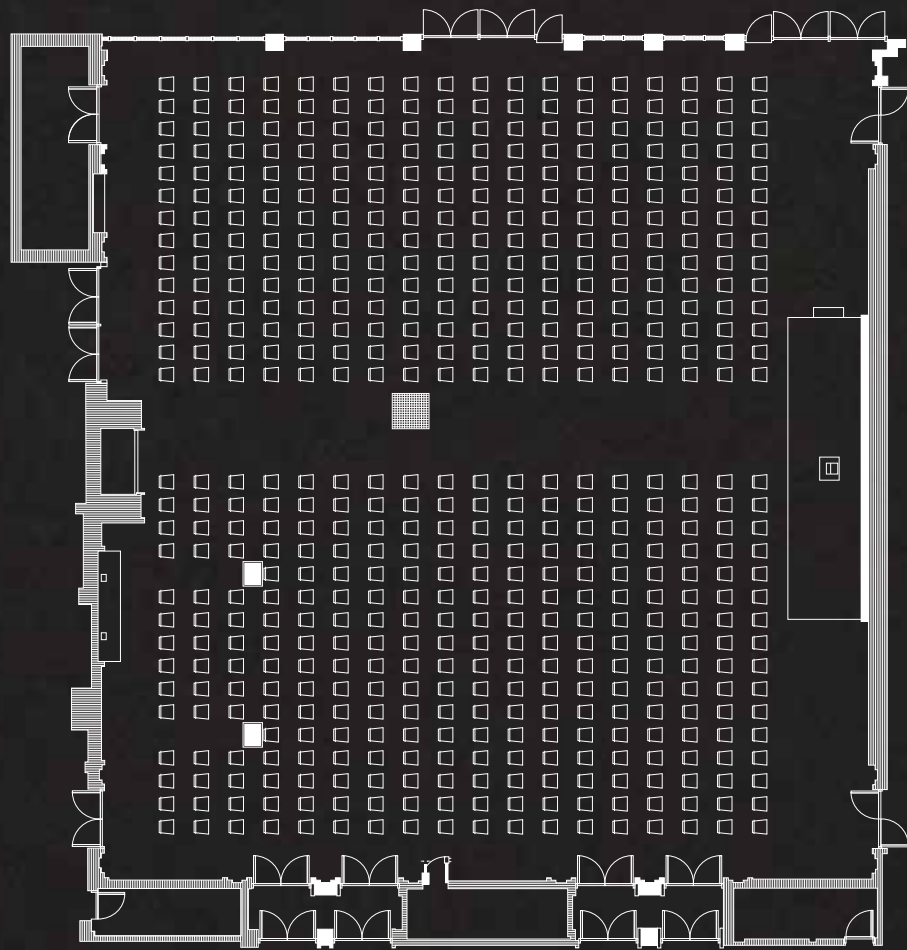


**NOBU HOTEL**  
LONDON PORTMAN SQUARE

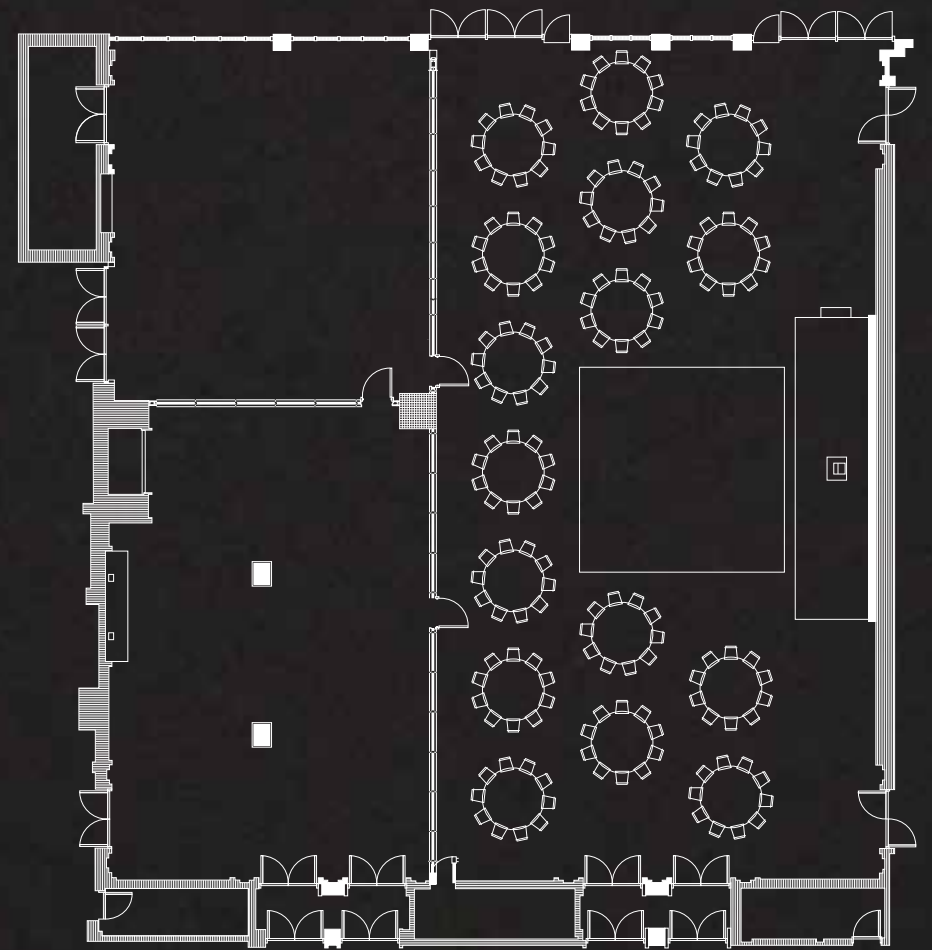
# BALLROOM



# BALLROOM



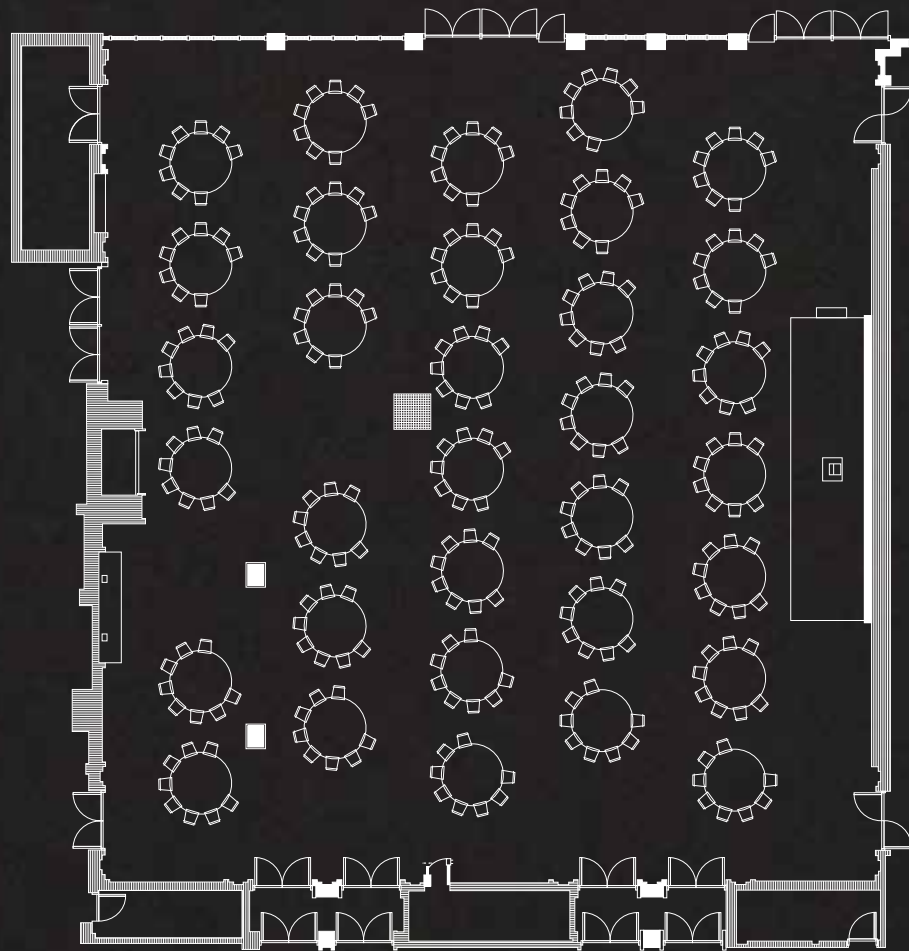
Nobu Ballroom - Theatre B



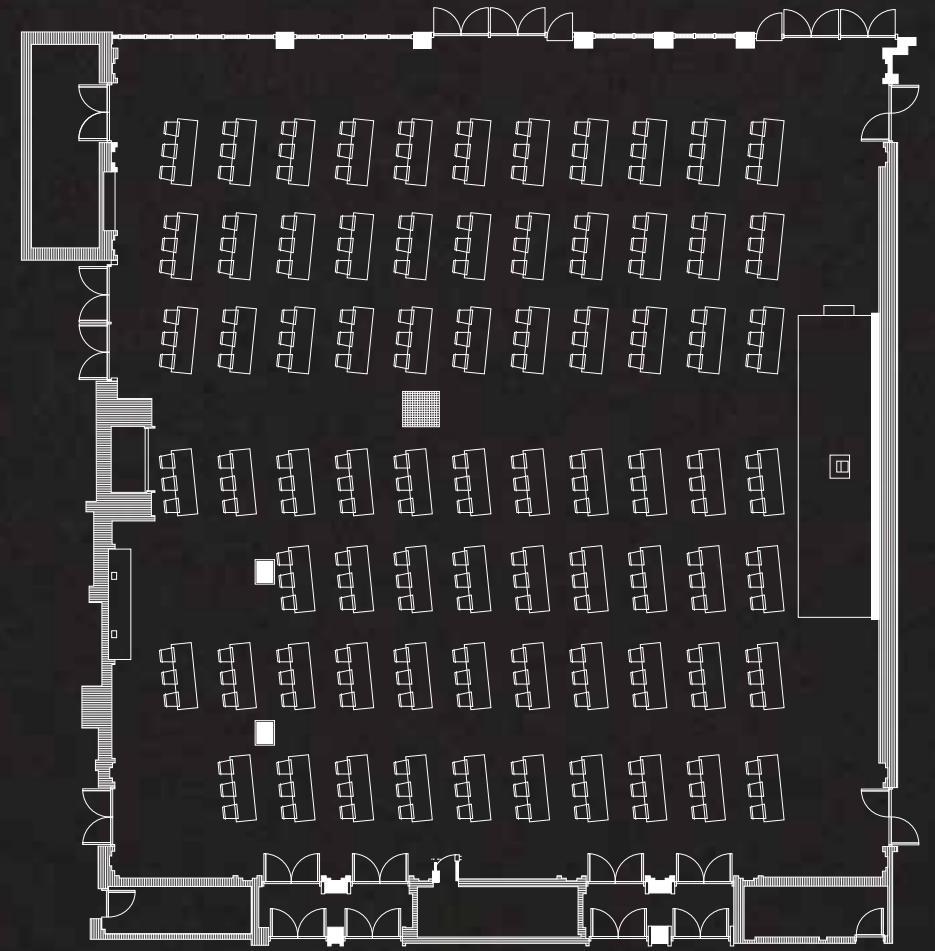
Nobu Ballroom - Dinner Dance



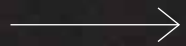
# BALLROOM



Nobu Ballroom - Cabaret



Nobu Ballroom - Classroom



VIEW THE SAYURI  
FLOORPLAN



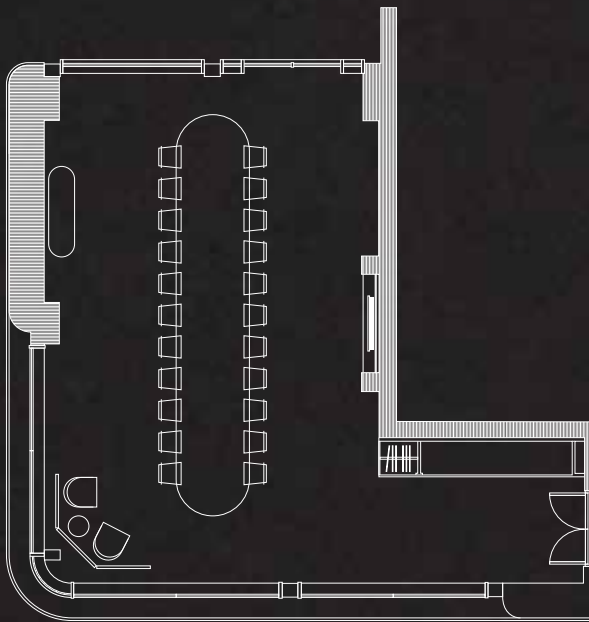
## SAYURI

The beautiful natural light of Marylebone is a true highlight of Sayuri, a space that can accommodate up to 22 boardroom or 24 cabaret style, and features the same state of the art equipment as found in the Sakura Boardroom and Lounge.

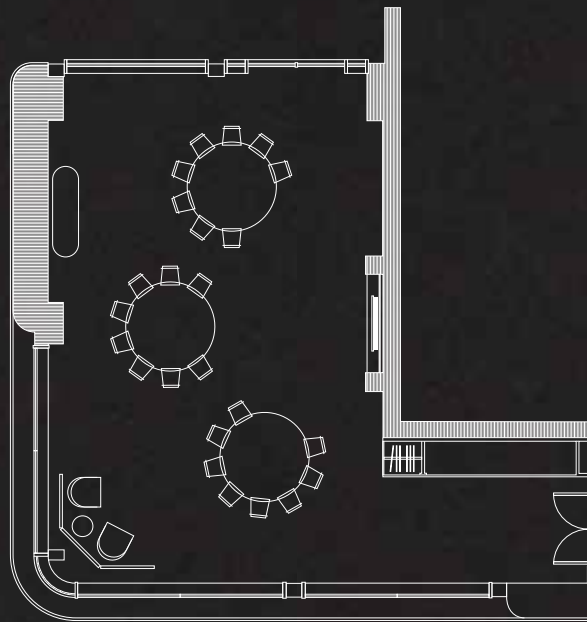
Flooded with natural daylight, the space can be used throughout the day for meetings, and into the evening for beautiful dinners and drinks receptions.



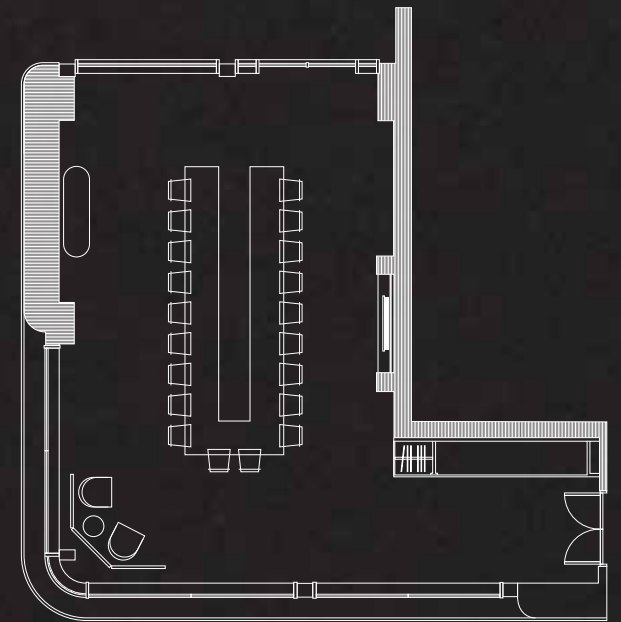
# SAYURI



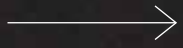
Sayuri Boardroom



Sayuri Cabaret



Sayuri U-shape



VIEW THE SAKURA  
FLOORPLAN



## SAKURA Boardroom & Lounge

The Sakura boardroom and Lounge is the perfect space for any type of meeting from a breakfast meeting, to a roadshow lunch the Sakura Boardroom is equipped with state of the art technology, very comfortable leather chairs, and an ultra-wide lens screen.

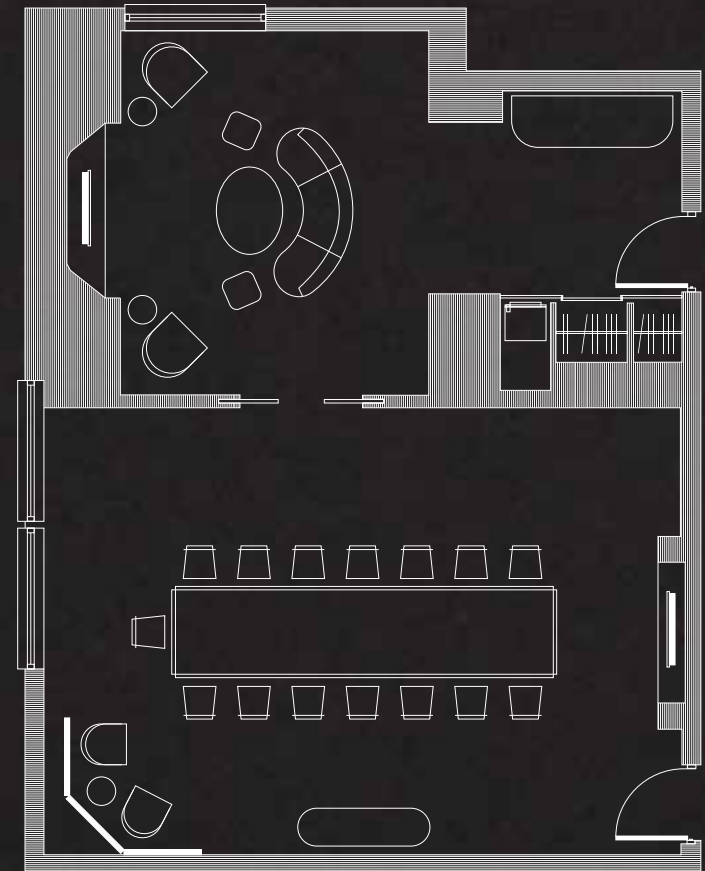






FLOORPLAN

# SAKURA



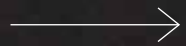
Boardroom size: 532 sq ft / 49.5 sq m

Lounge size: 364 sq ft / 33.9 sq m



---

ROOMS & SUITES



EXPLORE OUR  
ROOMS AND SUITES



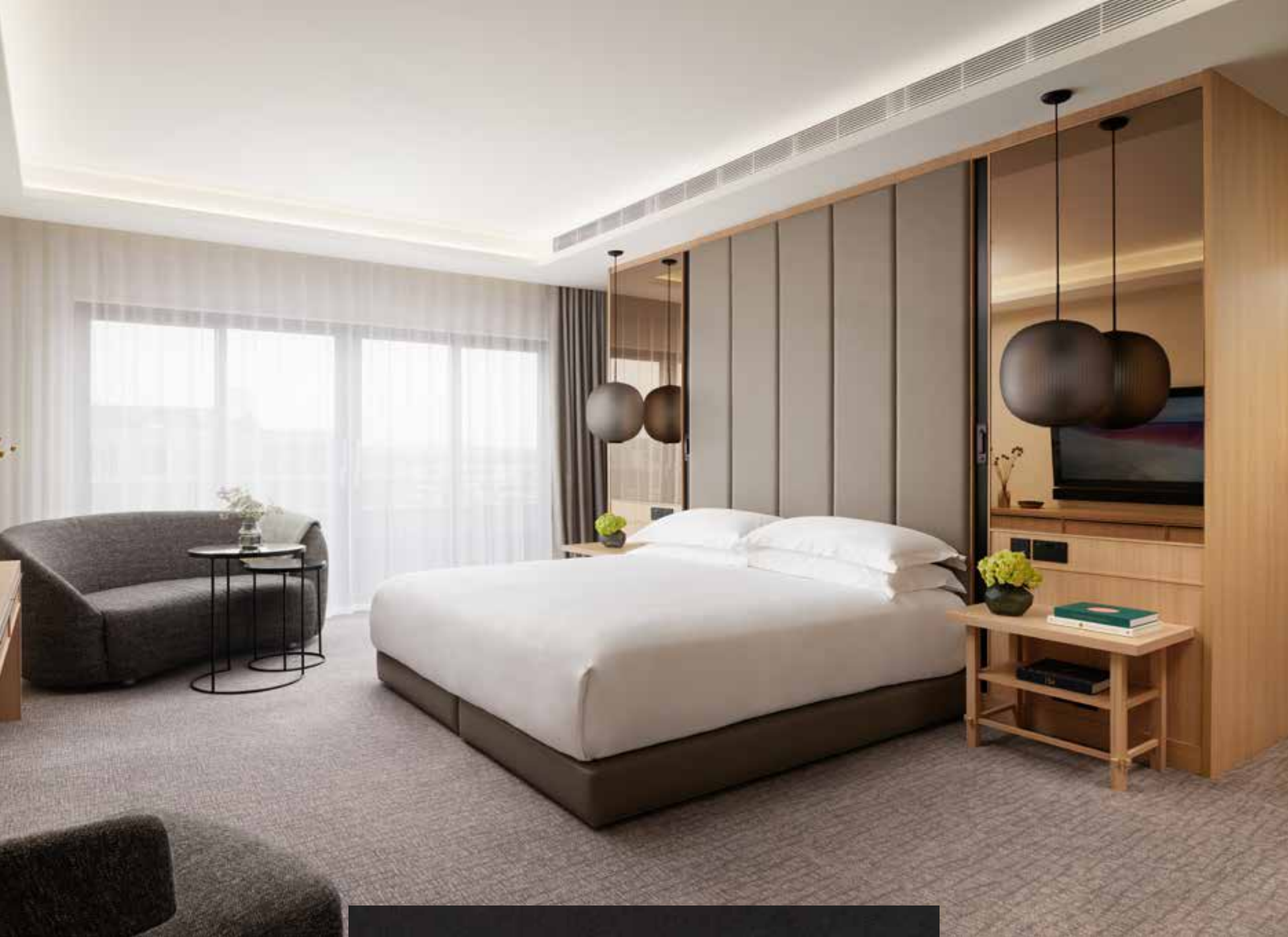
## ROOMS & SUITES

Each room at Nobu Hotel London Portman Square is perfect for an overnight stay in the city; individually designed, featuring Nobu Signature beds, HD smart TVs, minibars and a 24-hour Nobu room service. Each bedroom takes its inspiration from the traditional English garden within the adjacent Portman Square, drawing on the natural materials, textures and tranquility of this urban oasis.

Stay in one of our spacious suite with spacious living areas and balconies to take in the London skyline, or for a short stay our contemporary rooms are ideal.









## NOBU WELLNESS & FITNESS

*'Nobu Wellness and Pilates offers private hire options for various events, including product launches, retail pop-ups and press days providing a serene space for showcasing and demonstrations. With options for treatment rooms hire and pilates studio hire, it caters to a range of needs.'*



Nobu Hotel London Portman Square is the perfect lifestyle hotel with a gym in Marylebone to stay fit, focussed and relaxed, with a comprehensive range of both traditional and cutting-edge treatments, as well as a state-of-the-art gym and juice bar.

The hotel is also home to Nobu Pilates, the first of its kind and presents a unique approach to Pilates. Discover our signature classes in our innovative, light-filled Reformer Pilates studio. Fusing the principles of classical Pilates with a new and dynamic technique, Nobu Pilates delivers the ultimate sculpted physique.

Set in London's light-filled Reformer Pilates studio, Nobu Pilates fuses the principles of classical Pilates with a new and dynamic technique. Taking inspiration from the brand values of passion, integrity and growth, Nobu Pilates is a uniquely developed concept for Nobu Hotel London Portman Square.



PORTMAN  
SQUARE W1

CITY OF WESTMINSTER

## LOCATION

As our guest, you will experience the best the city has to offer with many things to do. Situated in the heart of central London, Nobu Hotel London Portman Square is just steps away from Marylebone's independent boutiques and only moments from the world-renowned shopping districts of Oxford Street and Regent Street.

Mayfair's cosmopolitan restaurants and bars are right on the doorstep, as are the internationally-acclaimed theatres and cultural venues of the West End. Immerse yourself in the city's history and heritage or enjoy first-class eating and drinking.

### Airports

26 km or 16 miles to London Heathrow

18 km or 11 miles to London City

48 km or 30 miles to London Gatwick

### London Attractions

5 min walk to Selfridge's / Oxford Street

5 min walk to The Wallace Collection

5 min walk to Marble Arch Station

6 min walk to Hyde Park

10 min walk to Wigmore Hall

10 min walk to Bond Street Station

12 min walk to Marylebone High Street

13 min walk to Baker Street Station

15 min walk to Oxford Circus / Regents street

15 min walk to Madame Tussauds London

20 min walk to Regent's Park

30 min walk to Buckingham Palace



# *NOBU HOTEL*

LONDON PORTMAN SQUARE

[CONTACT US](#)